

◆ **Features** ◆



Step on pedal to spin and wash



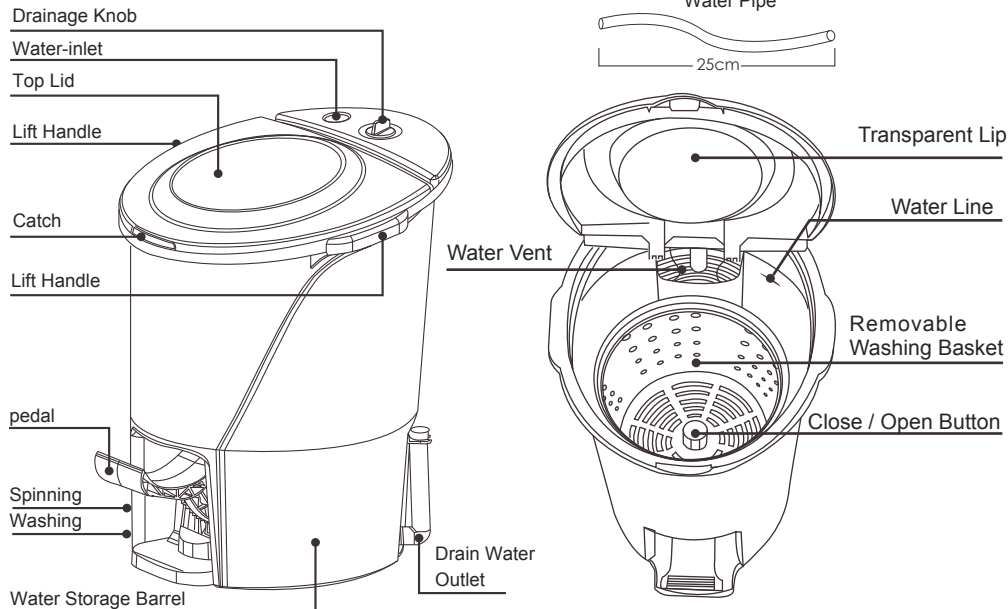
Twist-Break Design to create the water current and stir clothes for better cleaning



Twister

Multi-function Clothes Washing Machine

◆ **Parts Identification** ◆

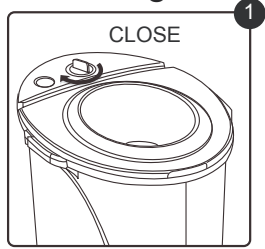


No Power Required!

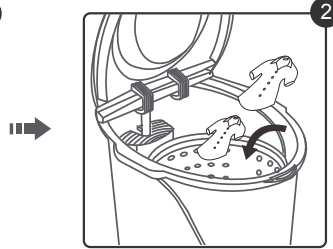
VIP7500

◆ OPERATIONS ◆

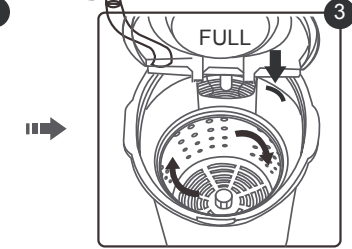
◦ Washing



Make sure the Drainage Knob is at OFF position before turning on the water



Open up the Top Lid and put clothes in with proper laundry detergent.

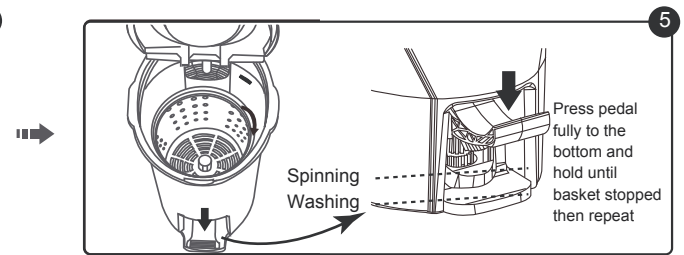


Turn on the water until reached to the FULL line

See also "Tip" at Figure 11

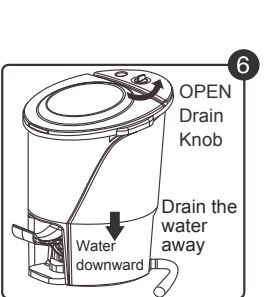


Get the clothes soaked for 2-5 Mins. before washing

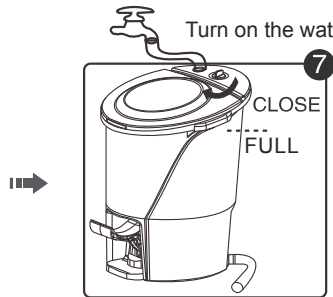


Step on the pedal to the bottom and hold for 2-3 seconds, step on the pedal again right after the basket stopped spinning. Repeat stepping for around 20 - 30 times per Minute until washing is clean

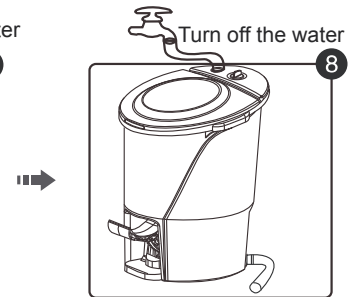
◦ Rinsing



After washing, turn the Drainage Knob to OPEN to transfer water to the Lower Storage Barrel.

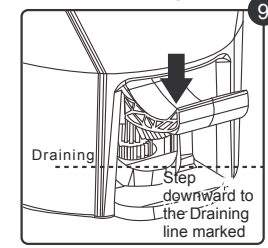


Turn the Drainage Knob to CLOSE position and turn on the water until the FULL line is reached. Step on the Pedal same as the above WASHING procedure to create water current for better cleaning. Keep stepping until rinsed.

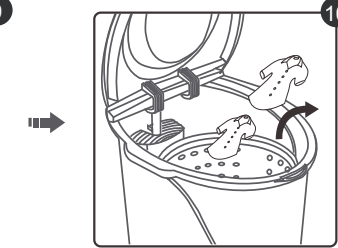


After rinsing complete, turn off the water and turn the Drainage Knob to OPEN position and drain the water away.

◦ Spinning

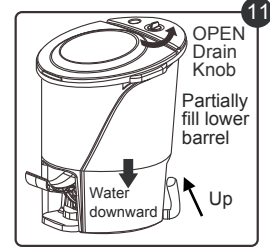


Step vigorously on the pedal at about 50-60 times per minute, but only press it about half way down (to the Draining Mark).



Complete draining and take out clothes.







◦ Tip



Add extra stability for wash & spin by partially filling the Lower Barrel with water.





◆ Washing Capacity and Category ◆

◦ Suggested washable category and Capacities

Categories	Capacity	Categories	Capacity
T-Shirt 	2-3	Male Underwear 	5-6
Towel 	4-5	Shorts 	1-2
Socks 	6-8	Female Underwear 	3-4

P.S. Mixed loads will vary the capacity depending on the size and type of fabrics. It is suggested to NOT exceed 4/5 of basket capacity.

◆ Suggested measure of laundry detergent ◆

Water Capacity	Powder type 	Liquid type 
13L	 3g	 4g

◆ Cautions ◆



- In order to avoid stepping resistance and waste of water, make sure to turn off water once reached to the FULL line before WASHING.
- Keep away from being played by children.
- For frequent washing, cleaning the inner barrel once awhile is suggested.....
- Keep the Pedal inner Structure away from water.
- To prevent Washing time being extended and save water, use only the detergent measure indicated above.

◆ Specifications ◆

Size: 342.8x408.8x455(mm)
Capacity: 1.Capacity of Basket: 4L
2. Water Capacity of Barrel: 13L
Material: PP
Weight: 2810g